



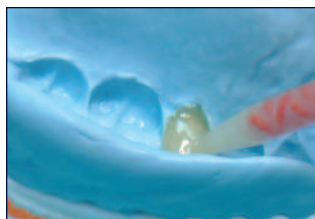
Integrity®

MULTI•CURE

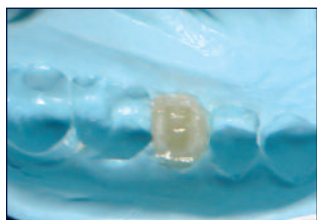
Temporary Crown and Bridge Material

TECHNIQUE GUIDE

1. Take matrix impression using Regisil® Rigid, Algin•X™ Ultra or Jeltrate® impression material.



2. Dispense Integrity® Multi•Cure material directly into the matrix. Place matrix into the patient's mouth within 45 seconds.



3. Remove the provisional crown or bridge from the mouth after approximately 90 seconds.



- 3a. Optional
Light cure each unit 20 seconds or place in a curing oven for 60 seconds.



4. After light curing or 5 minutes from start of mix, adjust and trim the provisional with a slow speed acrylic bur and/or a high speed diamond bur. Finish and polish.



5. **Cementation:** Apply a thin, uniform layer of Integrity® TempGrip® Cement to the entire internal surface of the Integrity® Multi•Cure material restoration.

Light-Cure Technique

0'45"

working time

0'45" - 1'30"

setting time in the mouth

1'30" - 2'15"

matrix removal from mouth

after mouth removal

light cure each unit 20 sec

after light cure

remove oxygen inhibition layer; trim margins; final finishing

SAVE 2-3 minutes!

Self-Cure Technique

0'45"

working time

0'45" - 1'30"

setting time in the mouth

1'30" - 2'15"

matrix removal from mouth

2'15" - 5'00"

final setting

from 5'00"

remove oxygen inhibition layer; trim margins; final finishing

ORDERING INFORMATION

Integrity® Multi-Cure Crown & Bridge Material

666650 **Introductory Kit**

- 1 Cartridge Integrity® Multi-Cure Material (76g)
- 15 Mixing Tips for Integrity® Multi-Cure Material
- 2 Syringes Integrity® TempGrip® Material (9g)
- 20 Mixing Tips for Integrity® TempGrip® Material
- 1 Dispenser and Slide



Cartridge Refills

1 Cartridge Material (76g); 15 Mixing Tips

666600 Shade A1

666610 Shade A2

666620 Shade A3.5

666630 Shade B1

666640 Shade BW



Integrity® Tempgrip® Temporary Crown & Bridge Cement

666450 **Syringe Refill Package**

2 Syringes (9g each); 20 Mixing Tips



Regisil® Rigid Super Fast Set Impression Material

619425 **4-Pack Refill (Purple)**

4 Cartridges (50ml each); 12 Micro-Mixing Tips



Algin•X™ Ultra Alginate Alternative

61E800 **4-Pack Refill Cartridge Fast Set**

4 Cartridges (50ml each); 6 Mixing Tips



Jeltrate® Alginate Impression Material

608503 **9 Canisters Regular Set** – Beige (454g each)

608522 **9 Canisters Fast Set** – Pink (454g each)



For Dental Use Only



Caution, Consult
Instructions for Use

www.dentsply.com / www.dentsply.de

©2011 DENTSPLY International. All rights reserved. Form #566601 (R 11/18/11)